

SHAPING THE FUTURE

BREMORE IRELAND PORT



A New World-Class
Multi-Modal Deepwater Energy
Port & Innovation District



By 2030, clean energy is expected to become the largest source in global electricity production — Ports, as Energy Hubs, are a critical part of that future for Ireland and Europe.

In a time when global sustainability intersects with economic objectives, the Government has strategically steered the nation toward a future anchored in renewable energy. Government focus extends beyond investing solely in renewable energy resources – it extends to supporting the future of our ports, critical enablers of this journey. The Government recognised the significance of Bremore Ireland Port in the port policy statement issued in December 2021 as one of several ports that are needed to deliver Ireland's renewable energy objectives.

The last year marked a historic milestone as the Government unveiled Ireland's inaugural offshore wind auction, a testament to our dedication to the renewable energy landscape. Contracts awarded to four offshore wind projects for a cumulative 3070 MW capacity demonstrate Government commitment to harnessing wind power and developing hydrogen energy while propelling Ireland to the forefront of energy innovation.

This year, the Government unveiled its National Hydrogen Strategy. This sets out the vision of the role that hydrogen will play in Ireland's energy system and its long-term role as a critical component of a zero-carbon economy.

As we move forward, the Government's sights are firmly set on realising our 5GW target through subsequent offshore wind auctions off our South and East coasts that are planned for the coming months. The Government's aspiration to deliver

30GW in the next decade represents a significant goal and a national ambition to accelerate our journey towards a zero-carbon economy.

Amid these ambitions, the east coast, which is my nearest shoreline, lies at its centre. The ports there will emerge as integral players, facilitating the transition toward a low-carbon future. Today, the Bremore Ireland Port project will showcase its role as a strategic pillar for offshore wind deployment and is a testament to the east coast's potential to reshape the energy landscape.

This year, the Government unveiled its National Hydrogen Strategy. This sets out the vision of the role that hydrogen will play in Ireland's energy system and its long-term role as a critical component of a zero-carbon economy, including the short-term actions needed to be delivered to achieve this ambition. The National Hydrogen Strategy has a three-pronged focus – decarbonising our economy, fortifying our energy security, and fostering industrial opportunities. This must translate into harnessing renewable hydrogen for transport, particularly in sectors like heavy goods transport, maritime, and potentially aviation. The potential for hydrogen parks and subsequent exports underscores the indispensable role our ports will play.

The development of Bremore Ireland Port and the accompanying Innovation District has the potential to generate thousands of jobs. The coastal project

represents a significant development for Ireland, anticipated to be one of the most substantial in the upcoming decade. It holds the potential to establish a prominent node in the eastern region.

Additionally, it will catalyse investments in homes, education, skills, heritage, and broader societal activities, particularly along the Dublin-Belfast Economic Corridor. It will be a game-changer for Louth, Meath, Fingal and Ireland.

Bremore Ireland Port will foster North-South trade, enhancing transport links and tourism and bolstering economic cooperation to support the economy on both sides of the border. It will be important for local government and regional development.

Bremore is poised to emerge as a significant world-class green deep-water port and a considerable asset to our national and regional economies. In closing, I am optimistic about the Bremore Ireland Port project's potential and its significant impact in decarbonising our economy, fortifying our energy security, providing new homes, and fostering industrial opportunities.

Minister Darragh O'Brien

TD, Minister for Housing, Local Government and Heritage of Ireland

OUR VISION

A MESSAGE FROM PAUL FLEMING, CEO OF DROGHEDA PORT CO.

As CEO of Drogheda Port Company, Director of Bremore Ireland Port and on behalf of the Board of Drogheda Port Company, we are delighted to present the master plan vision for Bremore Ireland Port – where port logistics, green energy, environmental stewardship, and innovation will converge. We are committed to achieving this vision, revolutionising Ireland's port and energy landscape, and spearheading the creation of a vibrant Innovation District on the Meath coast.

Bremore Ireland Port is, and will continue to be, the most significant public infrastructure project this country has seen in generations. It will deliver port capacity, energy transition to a hydrogen economy, and an innovative approach to development that integrates design and construction alongside the local community, respecting the region's environment, heritage, and archaeological treasures. Ultimately, it will reshape the regional and national economy in the coming decades.

It will contribute to creating high-quality employment in the region, negating the need for long daily commutes. It is a long-term phased project requiring best practice, consultation and sustainable master planning.

A World-class Port: Green Energy Hub and Innovation District

The need for a new world-class multi-modal deepwater energy port on Ireland's east coast is clear. The location was identified following extensive research and study and is the last suitable location on the east coast. There are immediate and future challenges for existing port capacity on the east coast, and for Ireland to maintain a competitive open export economy, new deep water port capacity is required. These are long-term commitments and developments that need to begin now to ensure a continuity of service and security of supply for the national economy.

Through a partnership between Drogheda Port Company and Ronan Group Real Estate, we are developing a port to align with green economic objectives. The plan for Bremore Ireland Port extends beyond maritime and logistic operations. We are creating a dynamic environment capable of assembling offshore wind turbines, producing green hydrogen, and exporting eco-friendly fuels. We will open new trade opportunities that will connect Bremore to Britain and further afield to countries in the EU, such as France, Netherlands, and Spain.

Bremore's reach stretches beyond the water's edge. We envisage Bremore's Innovation District as a hub for logistics, warehousing, distribution, local manufacturing, research and development, education, and training. The Innovation District's potential is limitless and will significantly complement regional economic development along the M1 from Drogheda to Balbriggan and Belfast to Dublin.

Bremore Ireland Port's development doesn't just respect the environment and local heritage; it aims to actively contribute to the community's wellbeing, fostering growth for the Louth, Meath, and Fingal regions. As we progress, we have placed paramount emphasis on respecting the rich heritage, archaeological significance, and environmental integrity of the Bremore region and beyond.

Bremore's reach stretches beyond the water's edge. We envisage Bremore's Innovation District as a hub for logistics, warehousing, distribution, local manufacturing, research and development, education, and training.



Charting the Path to Global Renewable Leadership

The Bremore Ireland Port project catalyses economic growth and community prosperity. Over a decade and beyond, Bremore Ireland Port's transformative impact on the local community will be considerably positive, ushering in an era of job creation and enhanced regional development. Bremore Ireland Port's initial development blueprint envisages a journey of progress over the next ten years that will invigorate the local economy and create a ripple effect of positive change. The infusion of capital investment, initially exceeding €1 billion, will serve as a stimulus for the regional economy and local businesses and boost numerous sectors.

Unleashing the potential for ports to become the energy hub of the future requires a concerted effort and collaboration between the public sector, private sector, research institutions,

and government agencies. The launch of the vision for Bremore Ireland Port marks the initial step in an extensive and ongoing consultation process, firmly distinct from presenting a formal planning proposal.

This consultation process is the precursor to the forthcoming stages of the project's progression.

The consultation process is a vital stage in ensuring the project aligns effectively with the views of the community, stakeholders, and the broader region. It is an opportunity for all concerned parties to provide input and help shape the project's development. The complexity and scale of the Bremore project necessitate a thorough and inclusive consultation period to ensure perspectives are considered and the project is designed with these views in mind.

The subsequent planning proposal, after a thorough consultation process, will encapsulate the refined project details, will emerge as the project

matures and incorporate the valuable insights and feedback gathered during this consultation process. We continue to engage with a wide range of stakeholders, including the newly established Maritime Area Regulatory Authority (MARA), the Government, local communities, local councils and interested groups as we progress.

In conclusion, the vision of Bremore Ireland Port is one of many opportunities where maritime logistics, green energy production and innovation converge to shape a promising future locally and nationally. Our journey forward is shared, guided by our ongoing engagement with stakeholders and collaborators. We look forward to our continued engagement with all stakeholders.

Paul Fleming
CEO, Drogheda Port Co.

SHAPING THE FUTURE

RORY WILLIAMS, CEO OF RONAN GROUP REAL ESTATE

As the CEO of Ronan Group Real Estate, I am pleased to join Drogheda Port Company in sharing our development vision for this project. The partnership between Ronan Group Real Estate and Drogheda Port Company will deliver a pioneering energy port and Innovation District. It will shape the nation's energy landscape and support the transition to a zero-carbon economy.

The project aims to create thousands of direct jobs by deploying capital investment exceeding €1 billion in the coming decade.

Through our partnership, we aim to support the Government's commitment to a low-carbon economy. This is key to achieving the objectives set out in the National Hydrogen Strategy and the long-term role hydrogen will play in decarbonising the economy, strengthening energy security and the development of industrial opportunities. The generation of green energy at Bremore Ireland Port provides a blueprint for the future of energy port development in Ireland.

The Bremore Ireland Port blueprint and master plan integrate nature, heritage, industry, and community. This master plan envisages an Innovation District that combines progressive technology, manufacturing and new living spaces while respecting and protecting Bremore's natural and historical environment.

The project aims to create thousands of direct jobs by deploying capital investment exceeding €1 billion in the coming decade. This will create substantial economic benefits for the

Meath, Louth, and Fingal regions, and many local businesses will benefit from the capital investment. As the port's commercial activities increase, it will create many new local industries and businesses of the future.

The launch of the vision for Bremore Ireland Port is the start of a lengthy and ongoing consultation process in advance of a planning application. The consultation process is an important step in the project to listen to the views of the local communities and stakeholders that will help to shape the project's development.

We are encouraged about the level of engagement we have had to date, and we will continue to engage with all stakeholders over the weeks and months ahead as we bring this groundbreaking project to life.



Rory Williams
CEO, Ronan Group Real Estate



Henning Larsen, Fælledby

Why Bremore?

A STRATEGIC HAVEN FOR THE FUTURE PORT



Located on the coast of Co Meath, Bremore emerges as the ideal location for a new world-class deep-water multi-modal energy port project – Bremore Ireland Port. This project aims to propel further Ireland's open trading economy, socio-economic gains for the regional economy, the offshore wind sector, hydrogen production and green energy goals.

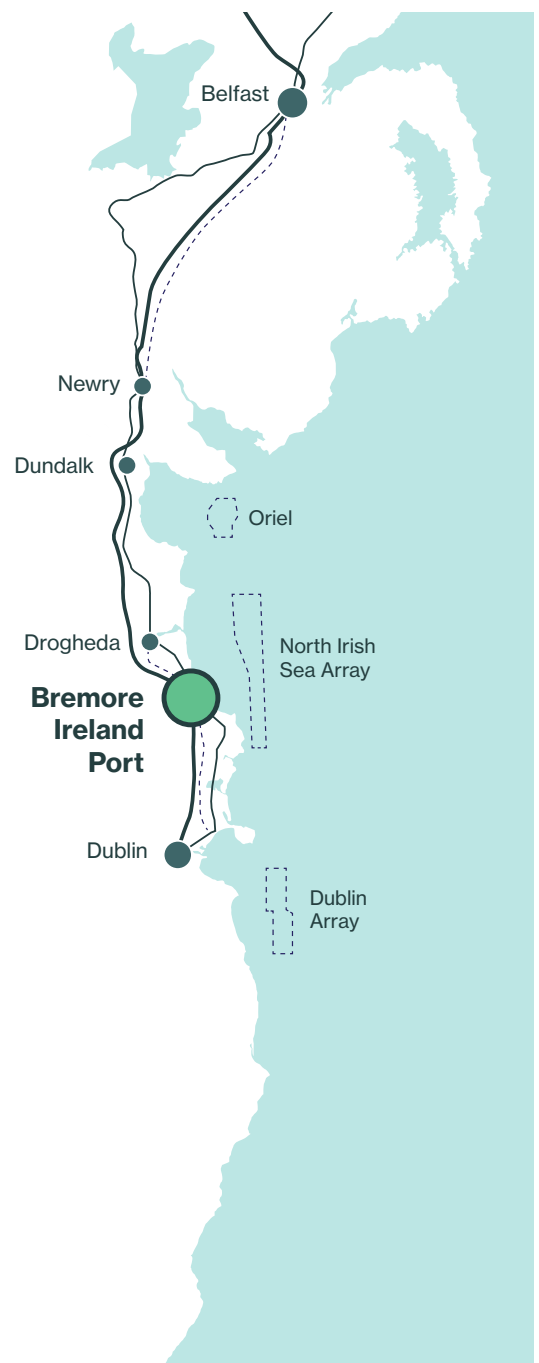
Strategic Location and Accessible Infrastructure

Bremore's strategic advantages are abundant. With a location ideal for regional economic development and job creation, Bremore has the essential hinterland connections and deep-water access crucial for a thriving energy and multi-modal energy port. Its position aligns seamlessly with Ireland's broader transportation network, including direct links to national road and rail networks. As part of the Greater Dublin transport node, Bremore is poised to serve as a pivotal hub for decarbonised transport logistics, decongesting urban spaces and fostering sustainable urban development.

Notably, Bremore Ireland Port is an essential core port on the EU Ten-T network, further enhancing its strategic importance.

Dublin-Belfast Economic Corridor

Situated on the bustling Dublin-Belfast Economic Corridor and connected to the Dublin-Belfast railway line, Bremore Ireland Port occupies a pivotal position in fostering North-South trade, enhancing transport links and tourism, and bolstering economic cooperation to support an all-island economy. The strategic location of Bremore ensures the port's capability to play a vital role in facilitating trade, transport and collaboration that will benefit both sides of the border.



BREMORE IRELAND PORT'S KEY ADVANTAGES

Central to Renewable Energy Supply

Bremore's approach to development aligns with national and EU sustainability objectives. With connections to the east coast wind projects and its proximity to natural deep water, Bremore Ireland Port holds promise for both fixed and floating wind endeavours. As Ireland strides towards ambitious green energy targets, Bremore Ireland Port is poised to play its role in achieving a more sustainable future.

Bremore Ireland Port's strategic location along the east coast offers a multitude of advantages. Nestled here, it enjoys the benefits of reduced exposure to adverse weather conditions compared to the more exposed south and west coasts. The port's accessibility extends

to deep waters just offshore, with careful consideration for future expansion and the accommodation of deeper-draft vessels, ensuring its relevance in evolving maritime needs. Adjacent to the north-south rail line, Bremore offers direct rail links, streamlining cargo and ferry passenger transportation. Its close proximity to the M1 motorway guarantees effortless road connectivity, facilitating the swift movement of goods and cargo.

Bremore Ireland Port also benefits from a nearby land bank, further bolstering its growth and development endeavors. Its innovative design optimizes layout efficiency, surpassing conventional port expansions. Notably, the layout strategically positions a deep hinterland area adjacent to each

quay wall, facilitating the efficient stacking and storage of cargo. Bremore Ireland Port caters comprehensively to diverse cargo types, including large component stacking for the Offshore Renewable Energy sector. Its remarkable versatility extends to all cargo types, incorporating dedicated space for Green Hydrogen development. With a phased construction approach, Bremore Ireland Port is poised for seamless expansion to meet the evolving demands of trade. The proposed layout inherently supports well-organized port operations, utilising quay space with maximum efficiency, making Bremore Ireland Port a pivotal player in the maritime landscape.



DRIVING LOCAL PROSPERITY: ECONOMIC BENEFITS AND JOB CREATION

A commitment to job creation is at the heart of the investment economic impact. Over the next decade, Bremore Ireland Port expects the creation of thousands of job opportunities spanning diverse sectors ranging from maritime operations, manufacturing and logistics to construction, research, education and technology.

Bremore Ireland Port's role as an energy port lays the groundwork for a robust maritime and industrial ecosystem. From offshore wind turbine assembly to green hydrogen production and the distribution of eco-friendly fuels, the port's diverse operational needs and the port's activities will generate a demand for skilled professionals across a spectrum of disciplines. The creation of Bremore Ireland Port and Innovation District will serve as a dynamic nucleus for education, research, and innovation. With a university hub, R&D offices, and knowledge-sharing platforms, it will attract scholars, researchers, and students.

Bremore Ireland Port's expansion also extends to its supply chain, igniting ancillary industries that support port operations. From equipment manufacturers and service providers

to maintenance and repair facilities, Bremore Ireland Port's growth will stimulate a network of businesses, creating a multiplier effect that reverberates throughout the Louth, Meath, and Fingal regions. The economic benefits of Bremore Ireland Port are not confined to a single decade. As the port's activities flourish, its sustained growth will perpetuate job creation and regional development in the decades ahead.

The development of new homes, community services, heritage and archaeological trails form part of the plan, enhancing the overall quality of life for residents and providing a focal point for community activities. The port's development includes plans for improved transportation infrastructure, which will alleviate traffic congestion and enhance overall connectivity.



THE IMPERATIVE FOR A NEW PORT

Bremore Ireland Port is, and will continue to be, the most significant public infrastructure project this country has seen in generations. It will deliver port capacity, energy transition to a hydrogen economy, and an innovative approach to development that integrates design and construction alongside the local community, respecting the region's environment, heritage, and archaeological treasures. Ultimately, it will reshape the regional and national economy in the coming decades.

At the core of Bremore Ireland Port's mission lies the solution to prevailing capacity constraints along the east coast. Our master plan envisages Bremore Port as the 21st-century Green Energy Hub, poised to drive regional expansion, alleviate urban congestion, and propel Ireland into a green energy revolution. The development of Bremore Port's infrastructure is set to yield a world-class deep-water, multi-modal energy port.

Comprehensive demand studies underscore the pressing need for modern port facilities capable of accommodating diverse vessel and cargo types for decades to come. This encompasses opportunities for decarbonisation and the facilitation of emerging trade prospects, notably in green energy and fuel exports. Our vision focuses on an ideal location, offering not only technical suitability but also efficient rail and road connectivity, bypassing congested areas.

Opting to construct a new port, rather than retrofitting an existing one, paves the way for innovation in design, operations, and crucially, harmonizing with the local environment. Our design studies have diligently considered the parameters of the natural surroundings, including the rich heritage found along the foreshore and surrounding land.

Ireland faces a pivotal moment where ambition intersects necessity,

with the nation's energy future hanging in the balance. The recently unveiled 'National Ports Study,'* a collaborative effort between Wind Energy Ireland and engineering consultancy firm Gavin & Doherty Geosolutions, has shed light on a critical requirement – Ireland needs a new port to harness the immense potential of a large-scale offshore wind industry. Moreover, the port's strategic location lends itself to servicing nearby offshore wind farm development and maintenance, serving as both a feeder port and operational facility.

Ireland's energy ambitions are ambitious, and the capacity of a single port cannot accommodate these aspirations. A concerted, multifaceted collaboration involving ports, community interests, developers, industry stakeholders, and the government is imperative to achieve our nation's carbon reduction objectives and support the National Hydrogen Strategy. Bremore's strategic positioning plays a pivotal role in facilitating Green Hydrogen renewable energy development, offering substantial export prospects.

This transformative endeavor promises robust regional and national economic growth, a bolstered local economy, inclusive of job creation, with investments in port infrastructure, an innovation district, and a large-scale energy generation hub.



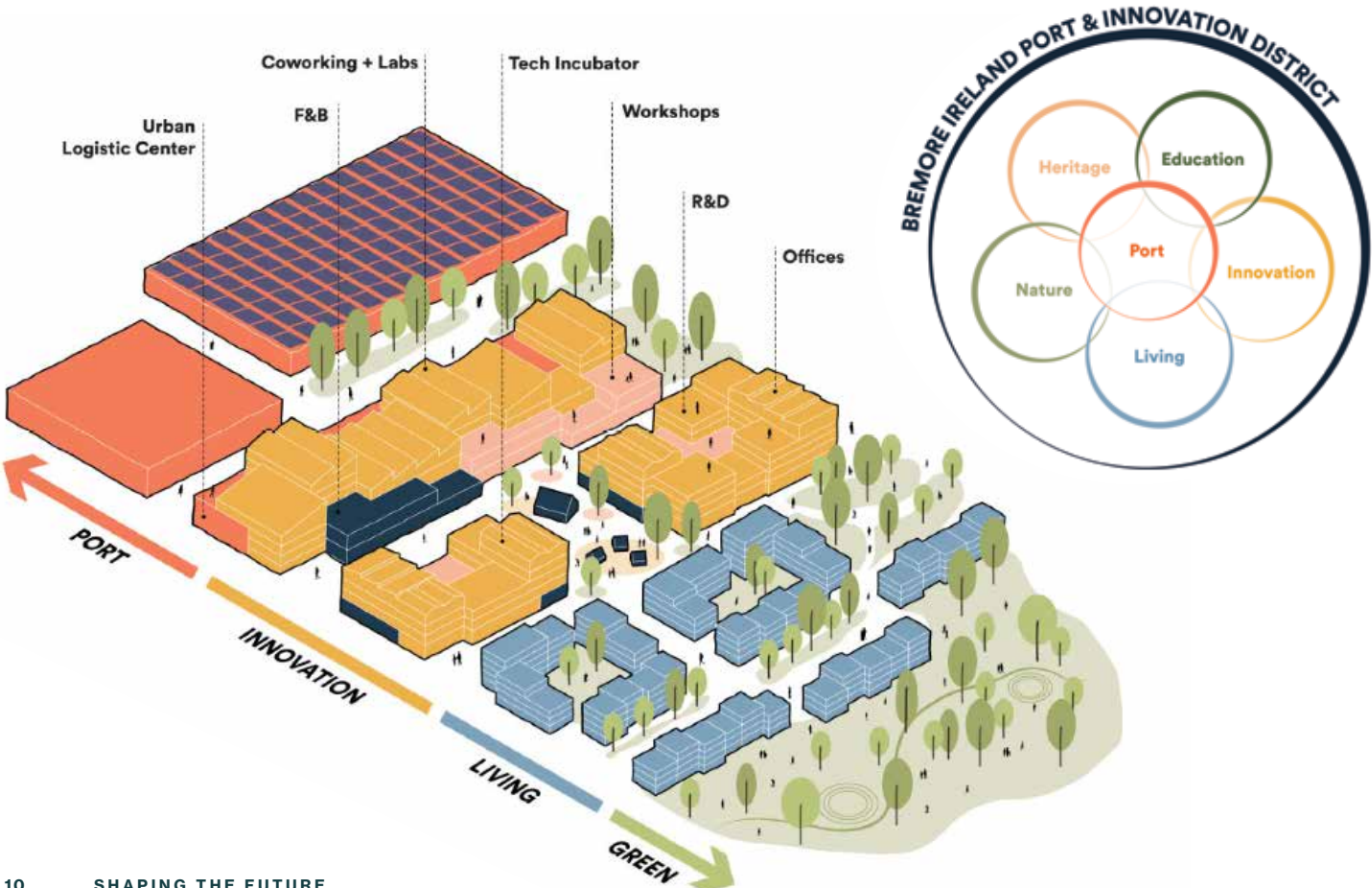
* Reference
windenergyireland.com
shorturl.at/vzAPT



Bremore's Vision

CRAFTING AN INNOVATION DISTRICT

Bremore Ireland Port envisages a vibrant future by developing a pioneering Innovation District. Guided by a master plan that intertwines nature, heritage, industry, and community, Bremore Ireland Port aims to redefine how an energy port can harmoniously coexist with cutting-edge urban development while preserving natural ecosystems and important archaeological areas.





A Harmonious Blend: Community and Residential

The project integrates the creation of new homes within its master plan. Community spaces – cafes, restaurants, sports arenas, and more – create a tapestry of social connections, fostering a sense of belonging. Residential areas, thoughtfully designed as apartments, houses, co-living spaces and more, respond directly to their surroundings, offering diverse lifestyles that cater to short-term and long-term needs, providing a competitive alternative only thirty minutes from Dublin.



Cherishing Nature and Heritage

Bremore Ireland Port aims to integrate nature and heritage into the urban fabric seamlessly. Greenways, heritage trails, and educational hubs allow residents and businesses to immerse themselves in an environment where sustainability and cultural exploration intertwine. From green roofs to tidal parks, Bremore's landscape becomes a living canvas that marries the past and the present.



Putting Sustainability at the Core

Bremore Ireland Port is spearheading the energy transition and decarbonisation. Over time, the Innovation District aims to be Ireland's first net-zero district by harnessing green energy production's power through green energy technology and efficient waste management to electrifying buildings and mobility.



The Innovation District

At the core of the Bremore Ireland Port vision lies the development of a groundbreaking Innovation District – an organic melding of urbanity and technology. This District envisages a future where port infrastructure and industrial prowess coalesce with knowledge, research, and sustainable living. The Innovation District envisages a multifaceted tapestry, combining light manufacturing, urban production, R&D offices, community services, residential areas and a dynamic university hub.



Symbiotic Synergies in Nature and Heritage

Bremore Ireland Port seeks to reimagine urban landscapes by embracing its rich natural and historical context. The master plan envisages introducing new types of synergies and innovations where nature-based activities, environmental monitoring, energy production, and heritage preservation converge. From CO2 capture to new natural habitats, Bremore's vision spans a spectrum that rejuvenates the ecosystem while fostering cutting-edge industries.



Bremore's Strategic Blueprint

The master plan utilises the site's natural features, weaving green and blue corridors that celebrate the local heritage through educational trails. These corridors act as connecting veins, linking the various components of the Innovation District. The innovative buffer, a hallmark of Bremore's plan, safeguards the right blend of programs, ensuring that Bremore thrives as an integrated ecosystem.



Programmatic Diversity: A Balanced Blend

Bremore Ireland Port seeks to reimagine urban landscapes by embracing its rich natural and historical context. The master plan envisages introducing new types of synergies and innovations where nature-based activities, environmental

monitoring, energy production, and heritage preservation converge. From CO2 capture to new natural habitats, Bremore's vision spans a spectrum that rejuvenates the ecosystem while fostering cutting-edge industries.

PROJECT

The collaboration amongst the partners and consultants... is a testament to the commitment of all involved to bring the project to fruition that will boost our national and regional economies

The Bremore Ireland Port project has been brought together through a partnership between the Drogheda Port Company and Ronan Group Real Estate, who have carefully managed it since its inception. The location of Bremore was identified through extensive research several years ago as the last strategic location on Ireland's east coast for a world-class deep-water multi-modal energy port.



The project is supported by collaborating with global leaders in their respective fields. From Drogheda Port Company and Ronan Group Real Estate, who have provided the foundational partnership, to visionary architects Henning Larsen and the engineering excellence of Gavin & Doherty Geosolutions, our partners' professional expertise and commitment are unparalleled.

The project's integrity is further solidified through collaborations with globally recognised firms such as EY, and many more partners, each contributing their knowledge and expertise. Our partners' involvement underscores the robustness of the Bremore Ireland Port project and its alignment with international standards, EU policy and best practices.

The project will engage with a wide range of stakeholders, including the newly established Maritime Area Regulatory Authority (MARA), the Government, state agencies, local communities, local councils and interested groups as the project progresses.

The collaboration amongst the partners and consultants working with Bremore Ireland Port, from the initial identification of its location to the present day, is a testament to the commitment of all involved to bring the project to fruition that will boost our national and regional economies but also contribute significantly to Ireland's green energy objectives.

PAVING THE WAY FOR SUSTAINABLE GROWTH

FINANCIAL AND TRADE FORECASTS POINT TO A STRONG COMMERCIAL AND ECONOMIC CASE FOR BREMORE IRELAND PORT.

Bremore Ireland Port offers a solution to port capacity constraints which could mobilise private investment and generate significant economic returns for Ireland.



ENERGY HUB

Ports as energy hubs will be an important competitive advantage in the future

The State's renewable energy ambition requires a reorientation towards energy-export and energy-intensive activities. Ports will be integral in the transportation and distribution of new fuels and can support the green conversion by supplying electricity to visiting carriers of different modes of transport.



BALANCED URBAN GROWTH

Delivers infrastructure which helps manage growth, tackle congestion and quality of life issues

Whilst ports provide many benefits for the national economy, there can be an imbalance between the benefits spilling over to the wider region compared to the local benefits considering the impact of port operations on environment, land use and traffic congestion. Bremore Ireland Port offers an alternative complementary capacity solution.



90%+ Ireland's internationally traded goods (volume) transported by sea

Being an island, Ireland is dependent on ports to facilitate trade and ports have a critical role in facilitating economic growth.



45% Ireland's GDP attributable to the Greater Dublin Area

An efficient supply chain requires port capacity close to the origin and destination of the country's importers and exporters. Bremore Ireland Port is strategically situated along Co Meath's coastline with deep-water, excellent hinterland connectivity and located on the Dublin-Belfast Economic Corridor.

€6bn

Potential commercial revenues across the first 30 years of operations

Designed to allow for expansion, demand forecasting suggests there exists the market potential for Bremore Ireland Port to become one of Ireland's largest ports by volume. Base Case financial forecasts indicate that Bremore Ireland Port has the potential to generate significant commercial revenues. Given the scale of the upfront funding requirement, State and EU support could mobilise private sector investment, unlocking significant economic benefits for Ireland.

€350bn

Value of goods imported and exported from Ireland in 2022

Ireland is a highly open economy with a strong export market focus and a dependency on foreign trade to meet its demand.

5.7m

Projected population in ROI by 2040

The economy has a positive outlook with population forecast to increase from 4.7m in 2017 to almost 5.7m people by 2040 (Project Ireland 2040 forecasts, noting a 5.15m population per Census 2022). This will mean that there will be more individuals and more companies, all of whom will demand more goods to meet their needs, and more firms exporting more goods for the global market.

DISCLAIMER

The information contained in this document is based on key inputs including i) Publicly available information, ii) demand forecasts undertaken by Black Quay Maritime Consulting Pty Ltd (an independent specialist port planning and maritime consultancy) on behalf of EY, iii) Information provided by Bremore Ireland Port, and iv) analysis undertaken based upon assumptions made about circumstances and events that have not yet taken place. Accordingly, there can be no assurance that the projected results will be attained and no representation or warranty whatsoever is given in relation to the reasonableness or achievability of the projections. While we have reviewed for reasonableness, we have not verified the accuracy of the data, information and explanations which is provided by Bremore Ireland Port Ireland whom are solely responsible for this data, information and explanations. This document was prepared on the instructions of our client (RGRE DevCo 3 Ltd) and should not be relied upon for any other purpose. Our report may not have considered issues relevant to any third parties. Any use such third parties may choose to make of our report is entirely at their own risk and we shall have no responsibility whatsoever in relation to any such use.

GET INVOLVED IN THE CONVERSATION



This project is being developed by Drogheda Port Company and Ronan Group Real Estate and will involve the Government, state agencies, locally based organisations, and the community.

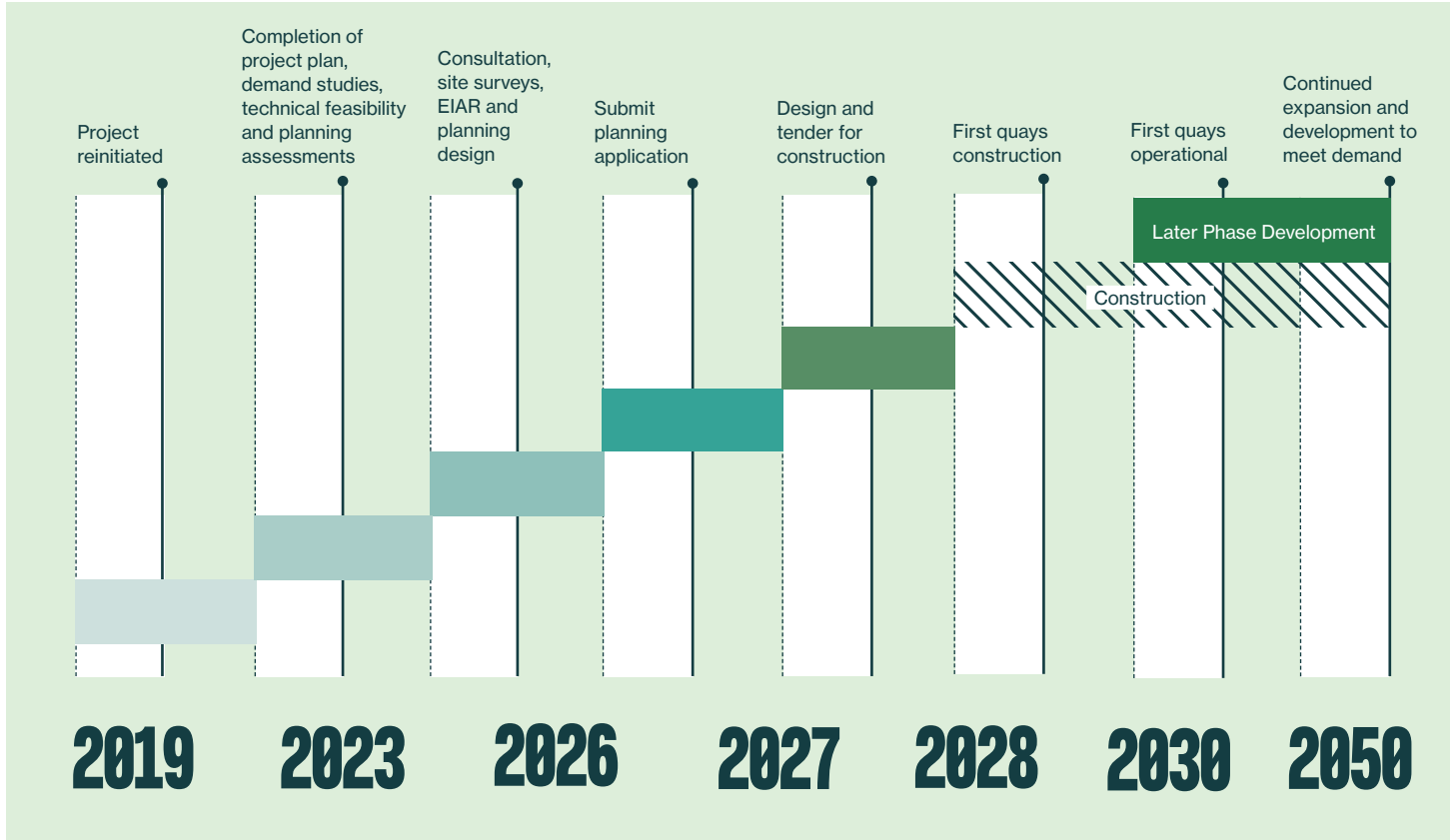
The vision will evolve and have input from other stakeholders over time. We welcome your feedback; we have launched a new website, bremoreirelandport.ie, where you can contact us or sign up to receive updates about the project.

The commencement of consultation marks the initial phase preceding formal planning steps. This pivotal step invites input from stakeholders and the public, shaping the foundation for our upcoming planning endeavours. This consultation process will continue through to the design process, culminating in planning and related applications to local authorities, the Marine Area Regulatory Authority (MARA) and An Bord Pleanála.



For updates, contact us at bremoreirelandport.ie

PROJECT TIMELINE



The Bremore Ireland Port project was reinitiated in 2019. Since then, significant milestones have been achieved, including completing the project plan, demand design, procurement phase, and funding and planning assessments.

The project aims to submit a comprehensive planning application by 2026/2027, following an inclusive public consultation process. Engaging with port users and stakeholders will shape the project's adaptable and integrated design.

The initial berths are anticipated to be operational between 2028 and 2030, subject to planning outcomes.

Conclusion

A SUSTAINABLE FUTURE AT BREMORE

As we embark on this transformative journey, the vision for Bremore Ireland Port – a convergence of trade and logistics infrastructure, green energy production, innovation, and sustainable progress – aims to support Ireland’s Climate, Ports, ORE, and Hydrogen Strategies. The Bremore Ireland Port project, championed by Drogheda Port Company and Ronan Group Real Estate, will help to redefine Ireland's energy landscape and propel the nation towards a greener future.

Bremore Ireland Port’s strategic location and accessible infrastructure position ensure that it can facilitate economic growth with resilient infrastructure serving imports and exports. Its connectivity to regional road and rail networks, alongside the integration of green electricity and fuels, underscores its significance in the journey towards renewable energy leadership. Alternative fuel supply in heavy goods and maritime transport will provide a significant impetus to decarbonise the economy.

Bremore Ireland Port’s evolution will go beyond maritime operations and create an Innovation District that blends nature, heritage, and industry. This Innovation District envisages

many possibilities – urban production, R&D offices, community services, and residential areas – all carefully woven together to create a dynamic ecosystem that fosters collaboration and sustainability.

Bremore Ireland Port’s vision extends beyond the immediate horizon, stretching to encompass the decades between 2030 and 2050 – a period of monumental change for Ireland's economic landscape driven by the harnessing of renewable energy resources. Bremore Ireland Port’s story is one of regional development, job creation and sustainable growth that will create a greener tomorrow for Ireland and the world.

Bremore Ireland Port’s story is one of regional development, job creation and sustainable growth that will create a greener tomorrow for Ireland and the world.



For updates, contact us at bremoreirelandport.ie



